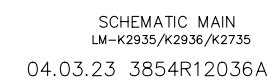


- **MAIN SCHEMATIC DIAGRAM**



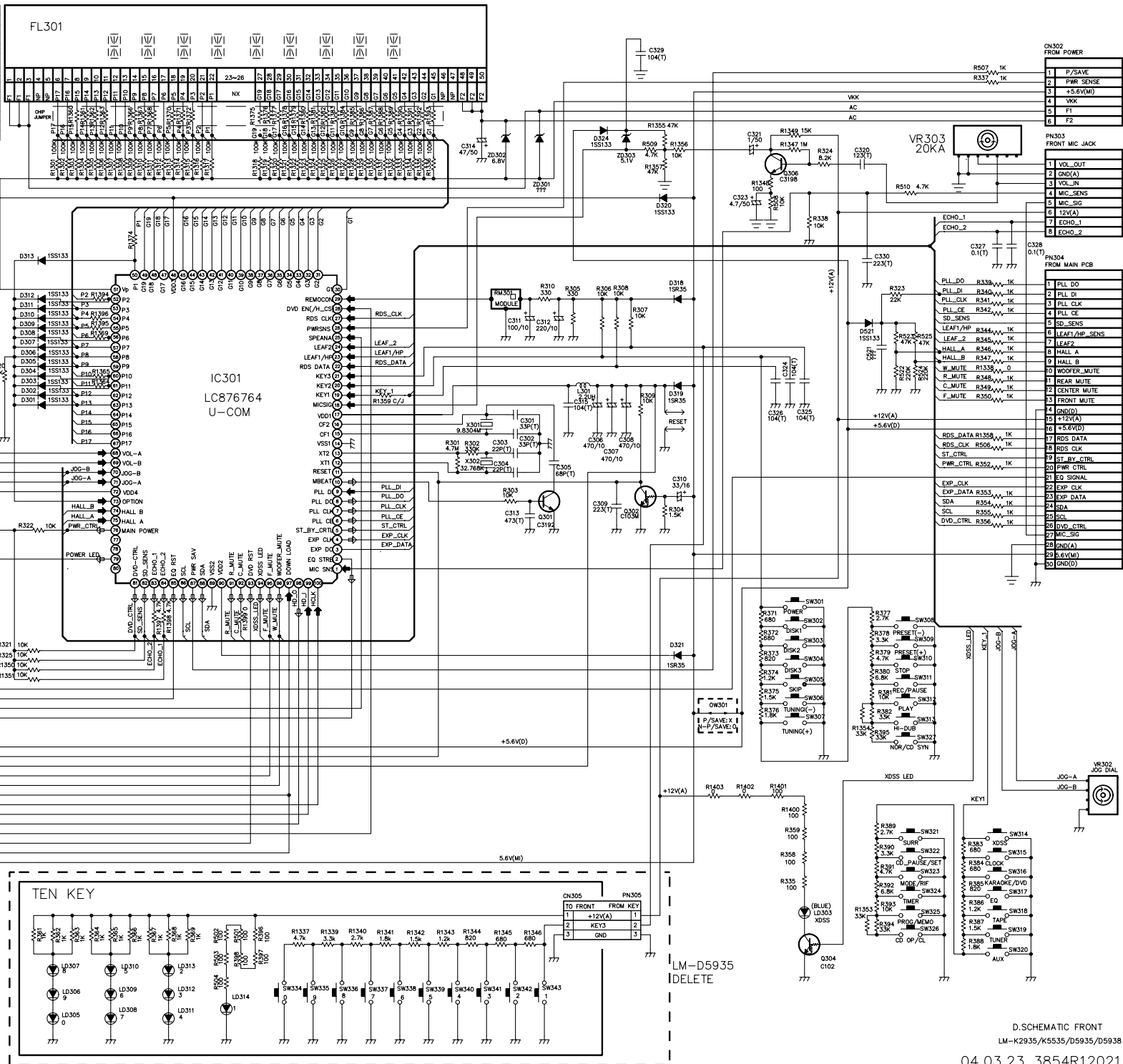
• FRONT SCHEMATIC DIAGRAM

NO	Symbol	CONTENTS	DESCRIPTION
63	D301	COLON	0 BLANKING
62	D302	RDS	0 RDS
61	D303	AM STEP	0 10KHz
60	D304	FM STEP	0 50KHz
59	D305	AREA-1	0 X
58	D306	AREA-2	0 EUR-3
57	D307	AREA-3	0 0
56	D308	DECK A-REVS	0 S/A-RVS
55	D309	POWER SAVE	0 POWER SAVE
54	D310	D/A-REVS	0 D/A-RVS
53	D311	VOLUME	0 INITIAL MODE
52	D312	MODE OPTION	0 LM-K2935
50	D313	MODE OPTION	0 LM-D5935

TO DOWNLOD	
RESET	1
VDD	2
GND	3
EN	4
DATA	5
CLK	6

FROM DVC	
GND	1
HCLK	2
D_DATA	3
A_DATA	4
D_CS	5
H_RESET	6
DL_SW	7
GND	8

	C102M	C103M	C104M	C110M	C111M
R1	10K	22K	47K	4.7K	10K
R2	10K	22K	47K		



LOCATION GUIDE

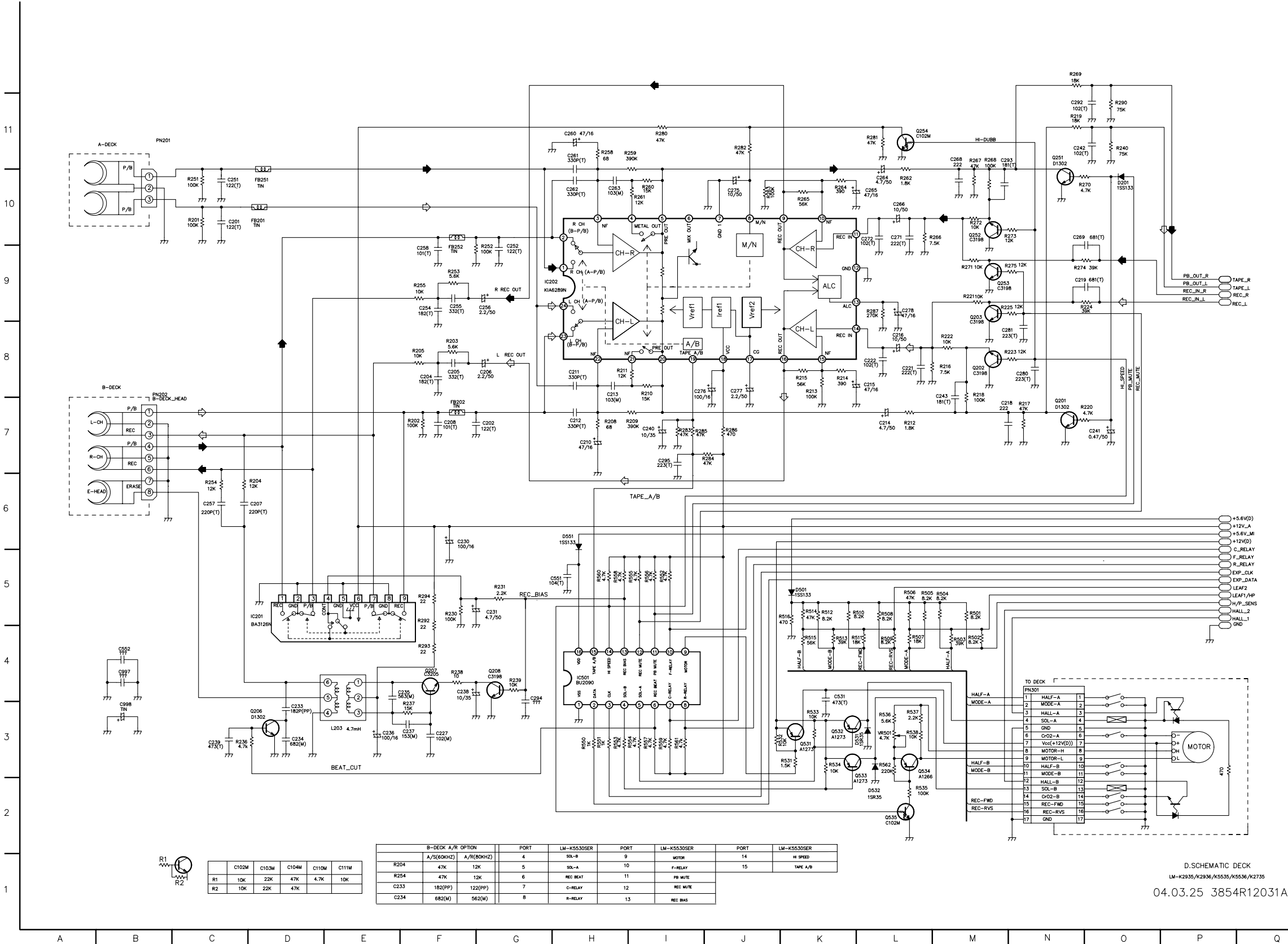
C301	K8	R1323	H10	R325	E5	SW320	P2
C302	J7	R1324	I10	R326	C4	SW321	O3
C303	J7	R1325	I10	R327	C4	SW322	O3
C304	J7	R1326	I10	R328	C3	SW323	O3
C305	K7	R1327	I10	R329	C3	SW324	O3
C306	K7	R1328	I10	R330	C3	SW325	O3
C307	L7	R1329	I10	R331	C3	SW326	O2
C308	L7	R1330	I10	R332	C3	SW327	O4
C309	K7	R1331	I10	R333	C3	SW328	H2
C310	L7	R1332	I10	R334	C3	SW329	H2
C311	K9	R1333	I10	R335	M11	SW330	H2
C312	K9	R1334	J10	R336	N10	SW331	I2
C313	J7	R1335	J10	R337	O9	SW332	I2
C314	J10	R1336	J10	R338	O9	SW333	I2
C315	K8	R1337	H2	R339	O9	SW334	J2
C316	D10	R1338	O8	R340	O9	SW335	J2
C317	D10	R1339	I2	R341	O9	SW336	J2
C318	D9	R1340	I2	R342	O8	SW337	K2
C319	E9	R1341	I2	R343	O8	SW338	K2
C320	N10	R1342	I2	R344	O8	SW339	O1
C321	M11	R1343	J2	R345	O8	SW340	O1
C322	E8	R1344	J2	R346	O8	SW341	J8
C323	M10	R1345	J2	R347	O8	SW342	J8
C324	M8	R1346	K2	R348	O7	SW343	K10
C325	N8	R1347	M10	R349	O7	SW344	K10
C326	M8	R1348	M10	R350	O7	SW345	J10
C327	O9	R1349	M11	R351	O7	SW346	J10
C328	P9	R1350	E5	R352	O7	SW347	D5
C329	L11	R1351	E5	R353	D5	SW348	M3
C330	N9	R1352	E8	R354	M3	SW349	M3
C331	N8	R1353	N3	R355	M3	SW350	M3
C332	N8	R1354	N4	R356	F2	SW351	F2
C333	P12	R1355	L11	R357	F2	SW352	F2
C334	K3	R1356	L10	R358	F2	SW353	F2
C335	E8	R1357	L10	R359	F2	SW354	F2
C336	E8	R1358	O7	R360	F2	SW355	F2
C337	E8	R1359	I8	R361	G2	SW356	G2
C338	E8	R1360	F11	R362	G2	SW357	G2
C339	E8	R1361	F11	R363	G2	SW358	G2
C340	E8	R1362	F11	R364	G2	SW359	G2
C341	E8	R1363	F11	R365	D3	SW360	D3
C342	E8	R1364	F8	R366	M6	SW361	M6
C343	E8	R1365	F8	R367	M5	SW362	M5
C344	E8	R1366	G11	R368	M5	SW363	M5
C345	E8	R1367	G11	R369	M5	SW364	M5
C346	E8	R1368	G11	R370	M5	SW365	M5
C347	E8	R1369	F9	R371	M5	SW366	M5
C348	E8	R1370	G11	R372	N6	SW367	N6
C349	E8	R1371	G11	R373	N5	SW368	N5
C350	E8	R1372	G11	R374	N5	SW369	N5
C351	E8	R1373	G11	R375	N5	SW370	N5
C352	E8	R1374	G11	R376	N5	SW371	N5
C353	E8	R1375	H11	R377	N5	SW372	N5
C354	E8	R1376	H11	R378	N5	SW373	N5
C355	E8	R1377	H11	R379	N5	SW374	N5
C356	E8	R1378	H11	R380	N5	SW375	N5
C357	E8	R1379	H11	R381	N5	SW376	N5
C358	E8	R1380	H11	R382	N5	SW377	N5
C359	E8	R1381	H11	R383	N5	SW378	N5
C360	E8	R1382	H11	R384	N5	SW379	N5
C361	E8	R1383	H11	R385	N5	SW380	N5
C362	E8	R1384	H11	R386	N5	SW381	N5
C363	E8	R1385	H11	R387	N5	SW382	N5
C364	E8	R1386	H11	R388	N5	SW383	N5
C365	E8	R1387	H11	R389	N5	SW384	N5
C366	E8	R1388	H11	R390	N5	SW385	N5
C367	E8	R1389	H11	R391	N5	SW386	N5
C368	E8	R1390	H11	R392	N5	SW387	N5
C369	E8	R1391	H11	R393	N5	SW388	N5
C370	E8	R1392	H11	R394	N5	SW389	N5
C371	E8	R1393	H11	R395	N5	SW390	N5
C372	E8	R1394	H11	R396	N5	SW391	N5
C373	E8	R1395	H11	R397	N5	SW392	N5
C374	E8	R1396	H11	R398	N5	SW393	N5
C375	E8	R1397	H11	R399	N5	SW394	N5
C376	E8	R1398	H11	R400	N5	SW395	N5
C377	E8	R1399	H11	R401	N5	SW396	N5
C378	E8	R1400	H11	R402	N5	SW397	N5
C379	E8	R1401	H11	R403	N5	SW398	N5
C380	E8	R1402	H11	R404	N5	SW399	N5
C381	E8	R1403	H11	R405	N5	SW400	N5
C382	E8	R1404	H11	R406	N5	SW401	N5
C383	E8	R1405	H11	R407	N5	SW402	N5
C384	E8	R1406	H11	R408	N5	SW403	N5
C385	E8	R1407	H11	R409	N5	SW404	N5
C386	E8	R1408	H11	R410	N5	SW405	N5
C387	E8	R1409	H11	R411	N5	SW406	N5
C388	E8	R1410	H11	R412	N5	SW407	N5
C389	E8	R1411	H11	R413	N5	SW408	N5
C390	E8	R1412	H11	R414	N5	SW409	N5
C391	E8	R1413	H11	R415	N5	SW410	N5
C392	E8	R1414	H11	R416	N5	SW411	N5
C393	E8	R1415	H11	R417	N5	SW412	N5
C394	E8	R1416	H11	R418	N5	SW413	N5
C395	E8	R1417	H11	R419	N5	SW414	N5
C396	E8	R1418	H11	R420	N5	SW415	N5
C397	E8	R1419	H11	R421	N5	SW416	N5
C398	E8	R1420	H11	R422	N5	SW417	N5
C399	E8	R1421	H11	R423	N5	SW418	N5
C400	E8	R1422	H11	R424	N5	SW419	N5

D.SCHEMATIC FRONT  
LM-K2935/K5535/D5935/D5938  
04.03.23 3854R12021A

• DECK SCHEMATIC DIAGRAM

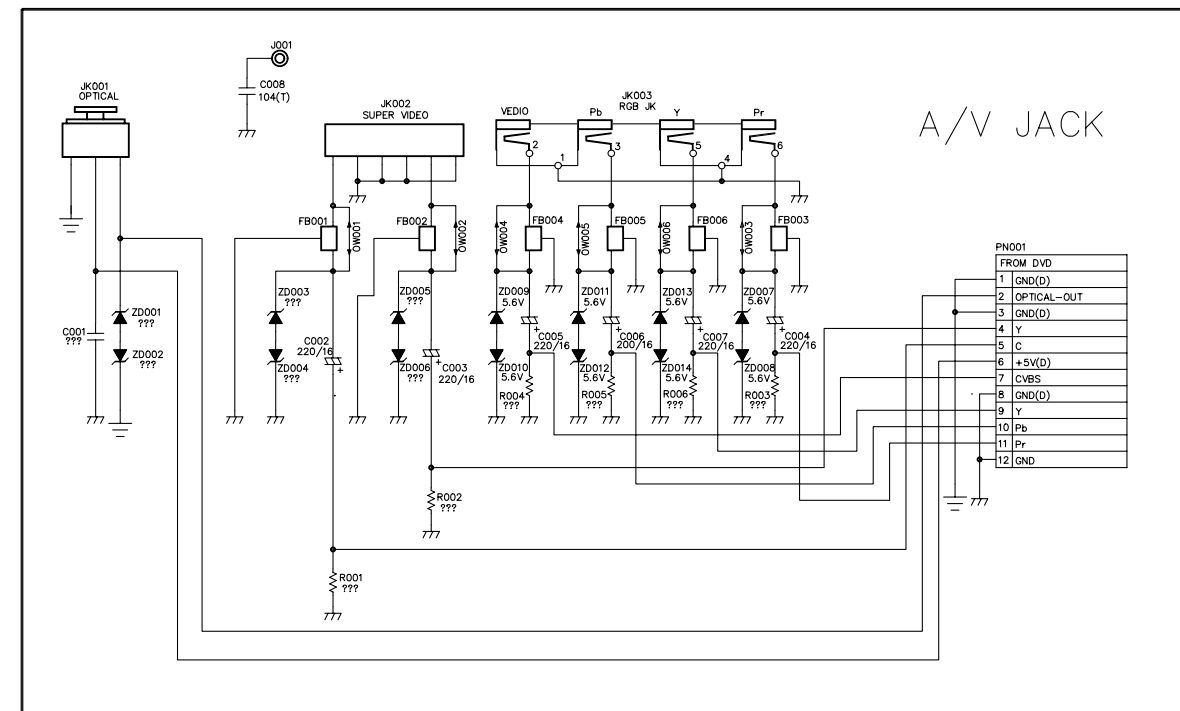
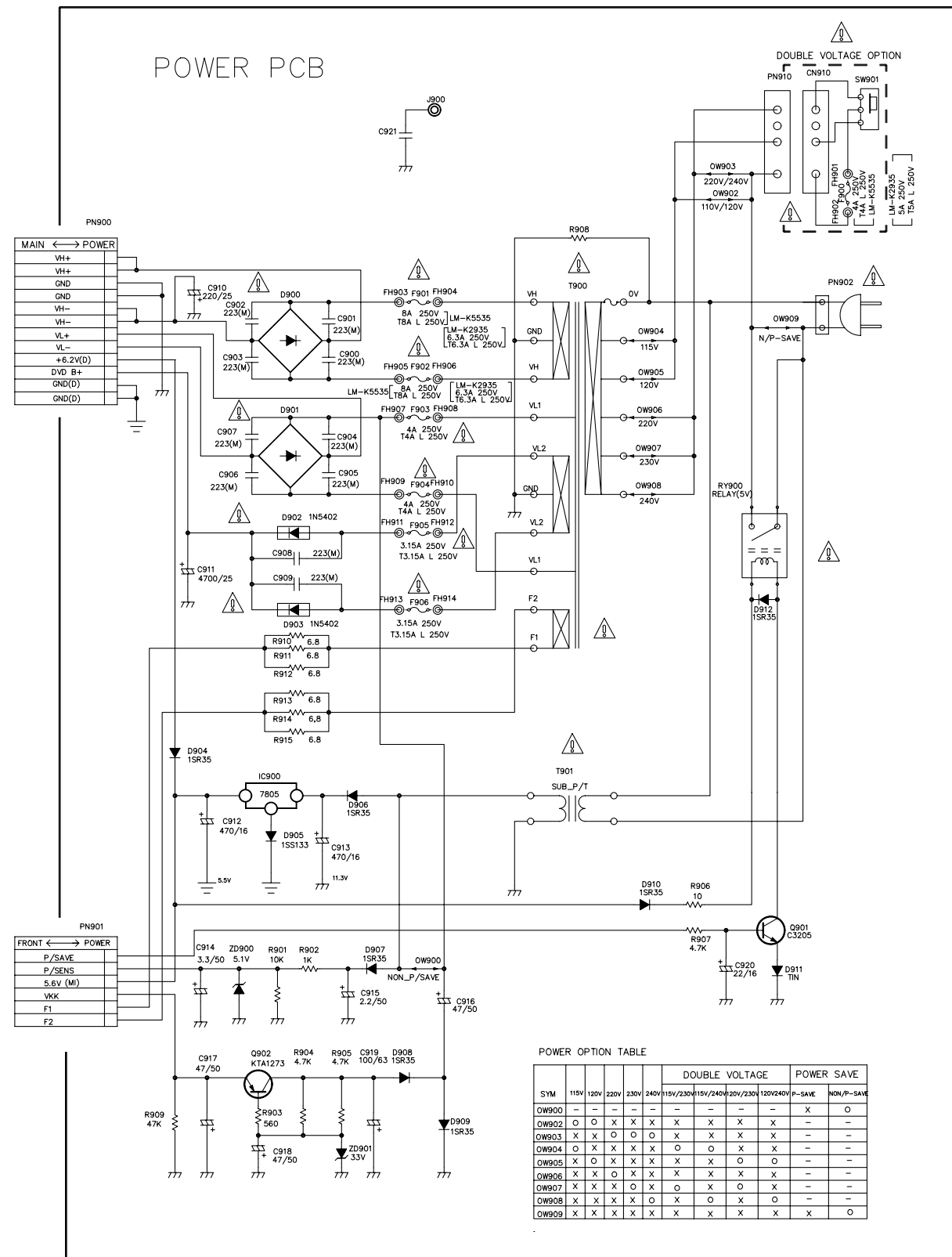
LOCATION GUIDE

C201	C10	R208	H7
C202	G7	R209	H7
C204	F8	R210	I8
C205	F8	R211	H8
C206	G8	R212	L7
C207	D6	R213	K8
C208	F7	R214	K8
C210	H7	R215	K8
C211	H8	R216	M8
C212	H7	R217	N7
C213	H8	R218	M8
C214	L7	R219	N11
C215	L8	R220	N7
C216	L8	R221	M9
C218	M7	R222	M8
C219	N9	R223	M8
C221	L8	R224	N9
C222	L8	R225	M9
C227	F3	R230	F5
C230	F6	R231	G5
C231	G5	R236	C3
C233	D3	R237	F3
C234	D3	R238	F4
C235	E4	R239	G4
C236	E3	R240	O11
C237	F3	R251	C10
C238	F4	R252	G9
C239	C3	R253	F9
C240	I7	R254	C6
C241	O7	R255	F9
C242	N11	R258	H11
C243	M7	R259	H11
C251	C10	R260	I10
C252	G9	R261	I10
C254	F9	R262	L10
C255	F9	R263	J10
C256	G9	R264	K10
C257	C6	R265	K10
C258	F9	R266	L10
C260	H11	R267	M11
C261	H11	R268	M11
C262	H10	R269	N12
C263	H10	R270	N10
C264	L10	R271	M9
C265	L10	R272	M10
C266	L10	R273	M10
C268	M11	R274	N9
C269	N10	R275	M9
C271	L10	R280	I11
C272	L10	R281	L11
C275	J10	R282	J11
C276	I8	R283	I7
C277	J8	R284	I7
C278	L9	R285	I7
C280	N8	R286	J7
C281	M8	R287	L9
C292	N11	R290	O11
C293	M11	R292	F5
C294	G4	R293	F4
C295	I7	R294	F5
C531	K4	R501	M5
C551	G5	R502	M4
C552	B4	R503	M4
C997	B4	R504	M5
C998	B3	R505	L5
D201	O10	R506	L5
D501	K5	R507	L4
D531	L3	R508	L5
D532	L2	R509	L4
D551	H6	R510	K5
FB201	D10	R511	K4
FB202	F7	R512	K5
FB251	D10	R513	K4
FB252	F9	R514	K5
IC201	D5	R515	K4
IC202	G9	R516	J5
IC501	H4	R531	K3
L203	E3	R532	K3
PN201	B11	R533	K3
PN202	B8	R534	K3
PN301	N4	R535	L2
Q201	N7	R536	L3
Q202	M8	R537	L3
Q203	M9	R538	L3
Q206	D3	R550	H3
Q207	F4	R551	H3
Q208	G4	R552	I5
Q251	N11	R553	H3
Q252	M10	R554	I3
Q253	M9	R555	I5
Q254	L11	R556	I5
Q531	K3	R557	I3
Q532	K3	R558	H5
Q533	K3	R559	I3
Q534	L3	R560	H5
Q535	L2	R561	I3
R201	C10	R562	L3
R202	F7	VR501	L3
R203	F8		
R204	D6		
R205	F8		



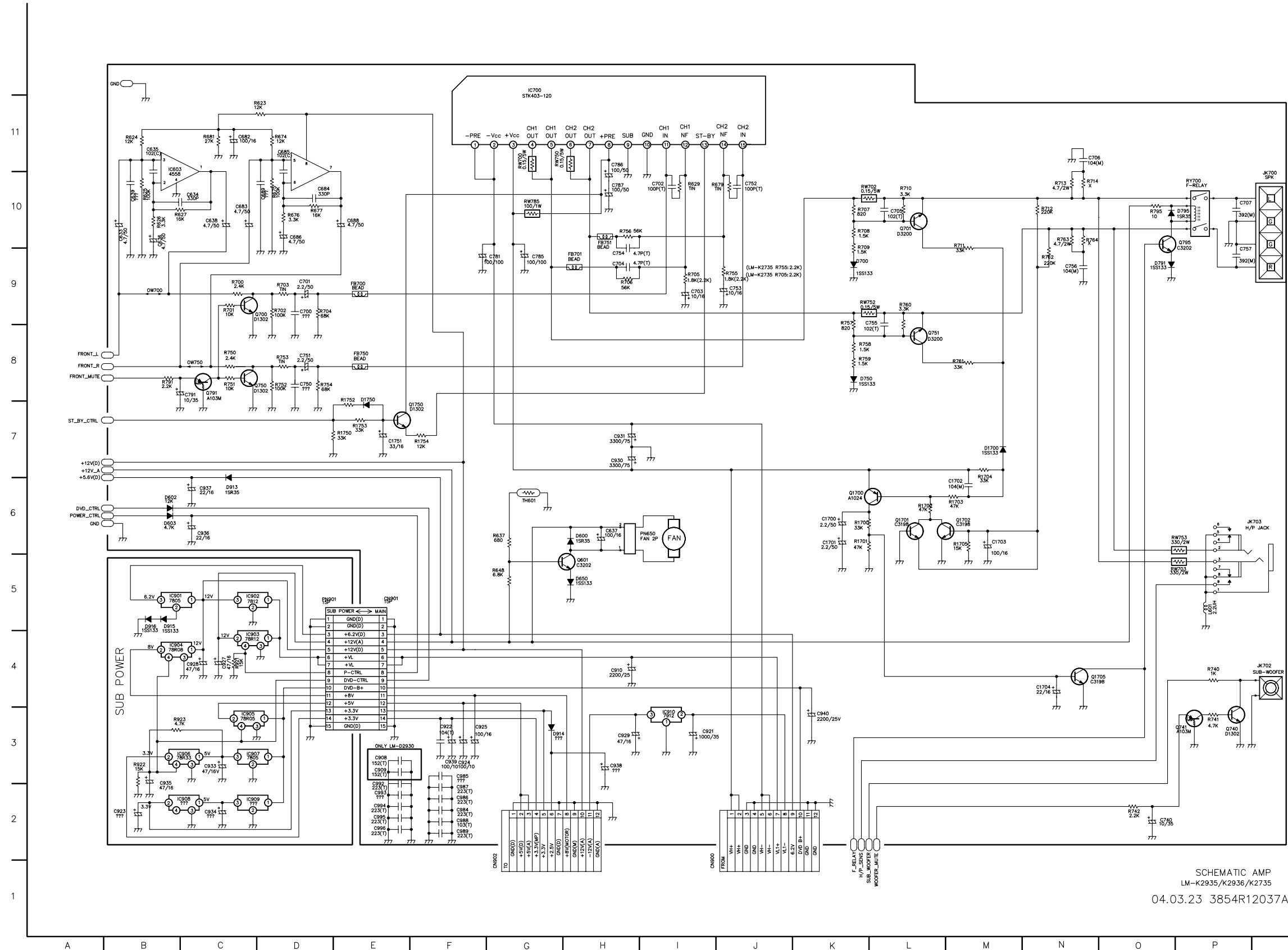
D. SCHEMATIC DECK  
LM-K2935/K2936/K5535/K5536/K2735  
04.03.25 3854R12031A

## • POWER/AV JACK/MIC SCHEMATIC DIAGRAM



SCHEMATIC POWER/AV JACK  
LM-K2935/K2936/K5535/K5536/K2735  
VD 3854R12033A

- **AMP SCHEMATIC DIAGRAM**

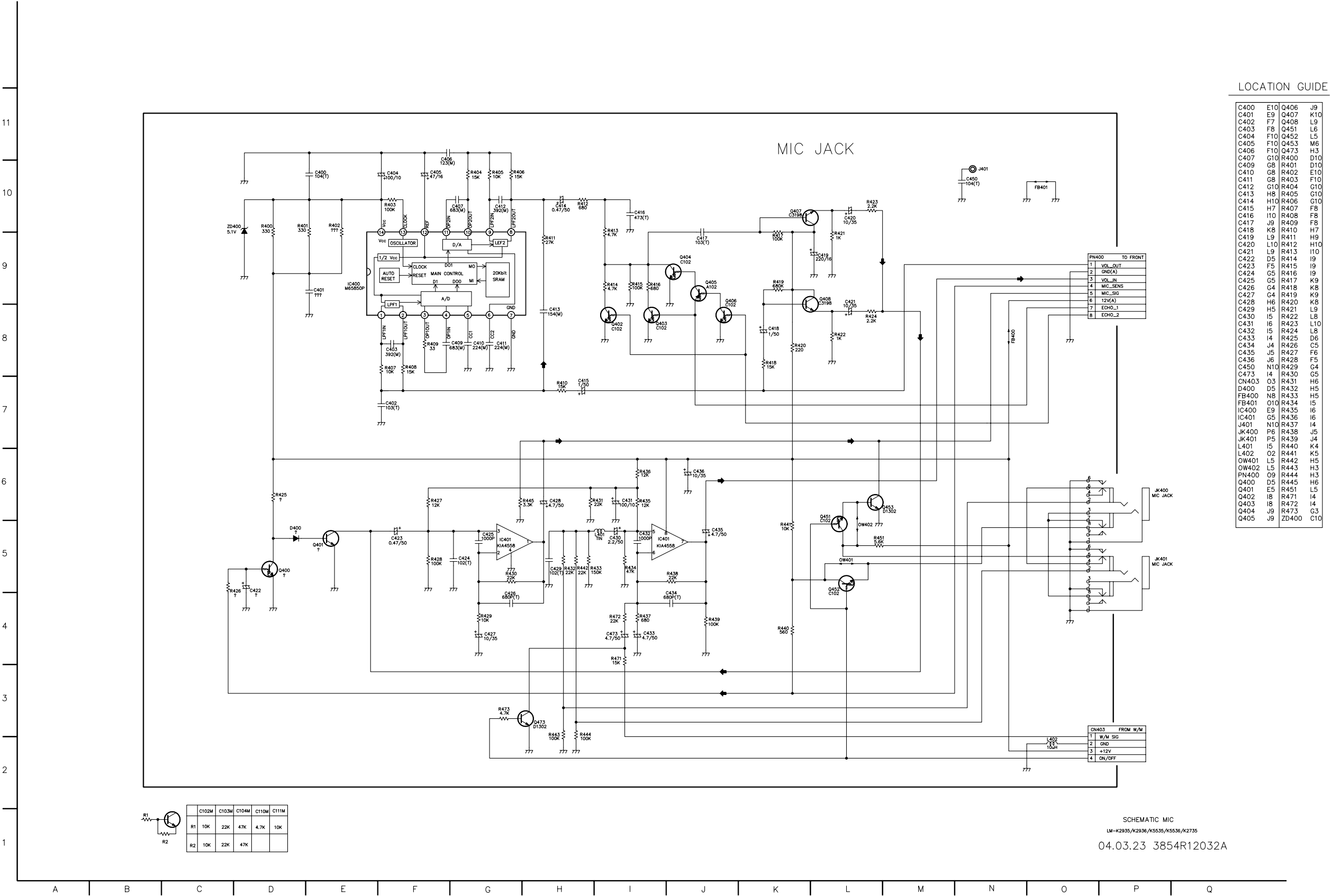


LOCATION GUIDE			
C1700	K6	IC909	C2
C1701	K6	IC910	I3
C1702	M6	JK700	Q10
C1703	M6	JK702	A4
C1704	M6	JK703	P6
C1751	E7	L601	P5
C633	B10	PN650	I6
C634	C10	PN901	D5
C635	B11	I1700	K6
C636	B10	O1700	L6
H6	H37	Q1702	P6
C638	C10	I1705	N4
C639	B10	Q1750	E7
C682	C11	Q601	H5
C683	C10	Q700	C9
C684	D10	Q701	L10
C685	B11	Q750	P3
C686	D10	Q741	P3
C688	E10	Q750	C8
C689	D10	Q751	L8
C700	D9	Q791	C8
C701	D9	Q795	P10
C702	H10	R1700	K6
C703	I9	R1701	K6
C704	H9	R1702	L6
C705	L10	R1703	M6
C706	N11	R1704	M6
C707	P10	R1705	M6
C740	O2	R1750	E7
C750	B8	R626	E7
C751	D8	R1753	F7
C752	J10	R1754	F7
C753	J9	R623	C11
C754	H9	R624	B11
C755	K9	R625	B10
C756	N9	R626	B10
C757	P9	R627	B10
C781	G9	R629	B10
C785	G9	R637	G6
C786	H11	R648	G5
C787	H10	R674	D11
C788	B8	R675	D10
E3	H8	R676	D10
C909	E3	R677	D10
C910	H4	R679	B10
C921	I3	R681	C11
C922	F3	R700	C9
C923	B2	R701	C9
C924	I3	R702	D9
C925	F3	R703	D9
C927	C4	R704	D9
C928	C4	R705	I9
C929	H3	R706	H9
C930	H7	R707	K10
C931	H7	R708	K10
C933	C3	R709	K9
C934	C2	R710	L10
C935	B2	R711	M10
C936	C6	R712	N10
C937	C6	R713	N10
C938	H3	R714	N10
C939	I3	R740	P4
C940	K3	R741	P3
C984	F2	R742	O2
C985	F3	R750	C8
C986	F2	R751	C8
C987	F2	R752	D8
C988	F2	R753	D8
C989	F2	R754	D8
C992	E2	R755	J9
C993	E2	R756	H10
C994	E2	R757	K9
C995	E2	R758	K8
C996	E2	R759	K8
C997	E2	R760	L9
CN901	E5	R761	M8
CN902	G1	R762	N9
D1700	M7	R763	N10
D1750	E8	R764	N10
D600	H6	R791	B8
D602	H6	R795	O10
D603	B6	R921	C4
D650	H5	R922	B3
D700	K9	RW700	G11
D750	K8	RW702	K10
D791	O9	RW703	O5
D795	P10	RW750	G11
D813	C6	RW750	O9
D814	C3	RW753	E6
D915	B5	RW785	G10
D916	B5	RW780	P10
FB700	E9	TH601	G6
FB701	H9		
FB702	B8		
FB751	H10		
IC603	B11		
IC700	G12		
IC901	B5		
IC902	C5		
IC903	A4		
IC904	B40		
IC905	C3		
IC906	B3		
IC907	C3		
IC908	B2		

SCHEMATIC AMP  
LM-K2935/K2936/K2735  
04.03.23 3854R12037A



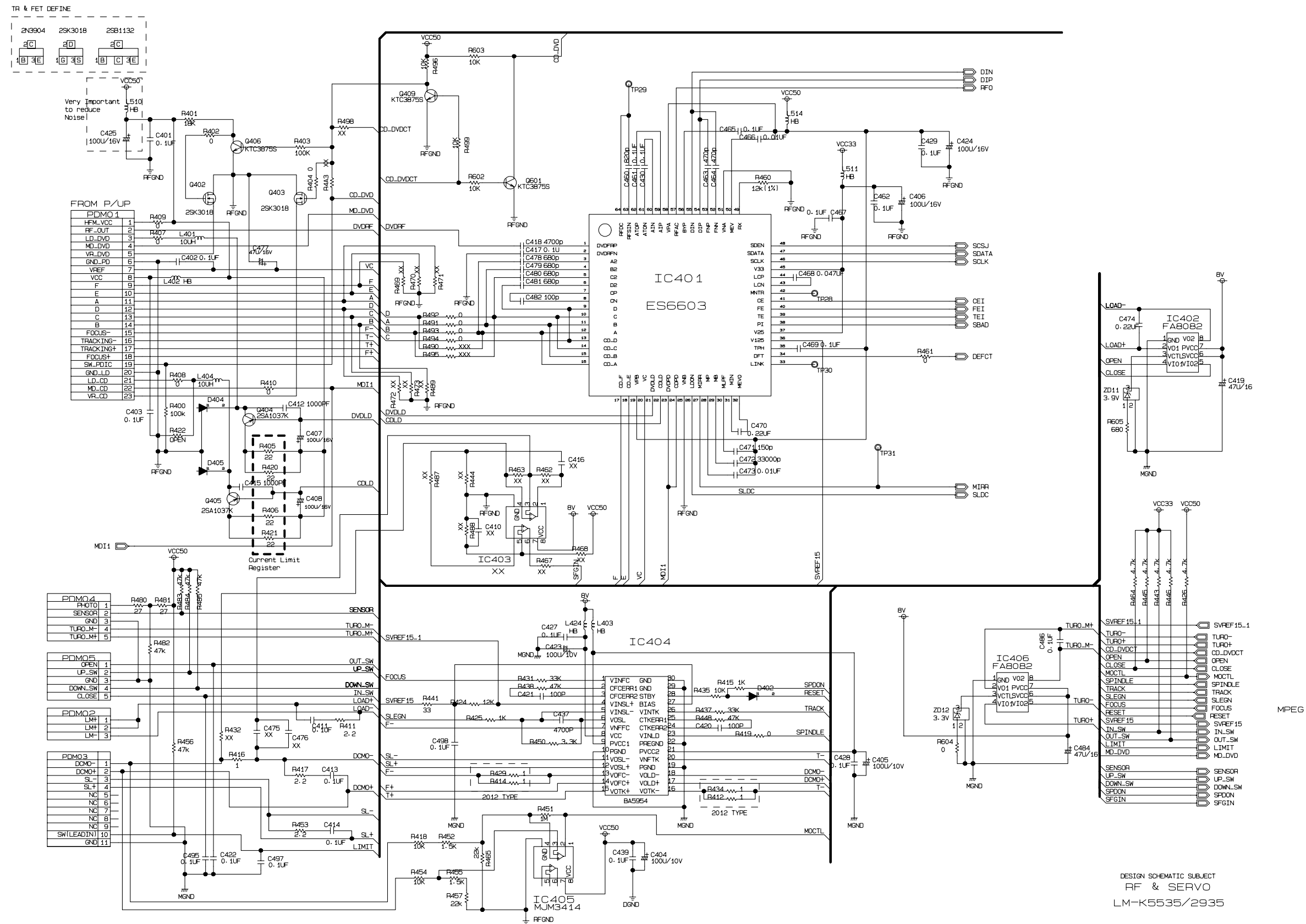
• MIC SCHEMATIC DIAGRAM



- **MPEG SCHEMATIC DIAGRAM**



• RF & SERVO SCHEMATIC DIAGRAM





• I/O SCHEMATIC DIAGRAM

